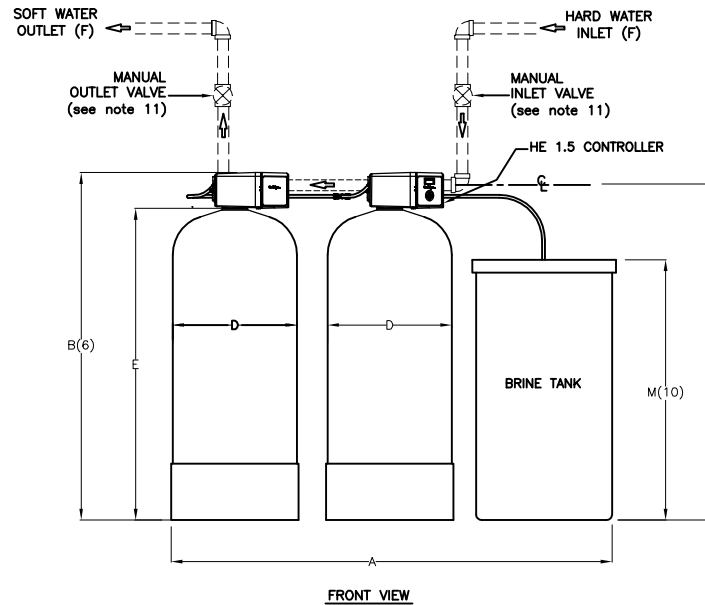
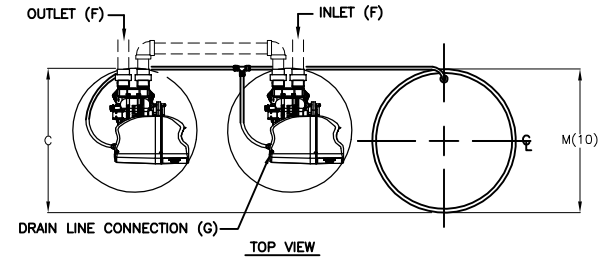


NOTES:

- (1) ITEMS SHOWN IN BROKEN LINES TO BE FURNISHED BY OTHERS.
- (2) ALL DIMENSIONS ARE ± 1 INCH (25mm) AND SUBJECT TO CHANGE WITHOUT NOTICE.
- (3) UNIONS SHOULD BE LOCATED ON INLET AND OUTLET CONNECTIONS OF CONTROL VALVE TO FACILITATE SERVICING.
- (4) THE USE OF DISSIMILAR METALS IN A PIPING SYSTEM IS NOT RECOMMENDED. WHERE DISSIMILAR METALS MUST BE CONNECTED IN A WATER SYSTEM. THE USE OF NONCONDUCTIVE (DIELECTRIC) FITTINGS MAY REDUCE GALVANIC CORROSION.
- (5) AN ELECTRICAL OUTLET SHOULD BE PROVIDED WITHIN FIVE FEET OF THE EQUIPMENT LOCATION.
- (6) ALLOW A MINIMUM OF 24 INCHES ABOVE SOFTENER FOR FILLING.
- (7) TO PERMIT THE OBSERVATION OF THE DRAIN FLOW DO NOT MAKE A DIRECT CONNECTION TO THE DRAIN. PROVIDE AN AIR GAP OF AT LEAST FOUR TIMES THE DIAMETER OF THE DRAIN PIPE OR CONFORM TO LOCAL SANITATION CODES.
- (8) SYSTEM USES FRP TANKS WHICH MUST NOT BE SUBJECTED TO VACUUM. INSTALL SIPHON BREAK ON DRAIN LINE. INSTALL VACUUM BREAKER ON INLET PIPING IF THE SERVICE LINE IS SUBJECT TO A VACCUUM.
- (9) FOR MAXIMUM PROTECTION OF THE CONTROLLER, IT IS RECOMMENDED THAT A DEDICATED 120 VOLT CIRCUIT IS PROVIDED.
- (10) BRINE TANK DIMENSIONS SHOWN ARE FOR THE BRINE TANK MOST COMMONLY SELECTED FOR USE WITH THIS SIZE SYSTEM.
- (11) SHIPPING AND OPERATING WEIGHTS SHOWN ON THIS DRAWING INCLUDE THE BRINE SYSTEM.

MODEL	DIMENSIONS (INCHES)										UNIT DATA PER TANK				DRAIN FLOW gpm	MIN. DRAIN PIPE SIZE IN.	DUPLEX OPER. WT. lbs.	DUPLEX SHIP. WT. lbs.
	WIDTH A	HEIGHT B(6)	DEPTH C	TANK DIA. D	TANK HEIGHT E	INLET/OUTLET PIPE SIZES F	DRAIN SIZE G	FLOOR TO INLET H	BRINE TANK DIA. L(10)	BRINE TANK HEIGHT M(10)	MAX. CAPACITY KGR @ SALT DOSAGE	RESIN VOLUME ft <sup>3</sup>	CONTINUOUS FLOW gpm @ 15 psi drop	PEAK FLOW gpm @ 25 psi drop				
HET-060	52	56.4	16	14	50.1	1.5	0.5	52.3	18	38	60 @ 30	2	25.1	31.5	5.5	0.5	1213	492
HET-090	62	59	20	16	52.7	1.5	0.5	54.9	24	40	90 @ 45	3	26.6	35.2	5.5	0.5	1705	675
HET-120	62	71	20	16	64.7	1.5	0.5	66.9	24	40	120 @ 60	4	23.3	31.8	5.5	0.5	1925	795
HET-150	66	72.5	21	18	66.3	1.5	0.5	68.5	24	40	150 @ 75	5	35.8	35.8	7	0.5	2265	975
HET-210	72	73.4	22.5	21	67.1	1.5	0.5	69.3	24	50	210 @ 105	7	28.0	37.4	11.5	0.5	2950	1270



DO NOT SCALE DRAWING TOLERANCES: ±1/8" UNLESS OTHERWISE NOTED				
Let.	Change	By	App	Date

**Culligan®**  
**ENGINEERED SYSTEMS**  
 ROSEMONT, ILLINOIS

PRINT AND BILL OF MATERIAL ARE NOT TO BE USED WITHOUT THE WRITTEN CONSENT OF CULLIGAN INTERNATIONAL

NAME		
HET 1.5" AUTOMATIC SOFTENER TWIN TECHNICAL DATA SHEET		
DETAILED BY: BBV 03/28/11	APP. BY:	SHEET 1 OF 1
REF. NO.	PART NO. HET 1.5	